

CHINA CHAMBER OF COMMERCE FOR IMPORT AND EXPORT OF  
MACHINERY AND ELECTRONIC PRODUCTS

中国机电产品进出口商会



## Major Achievements



A 5A-level social organization  
graded by Ministry of Civil Affairs of China

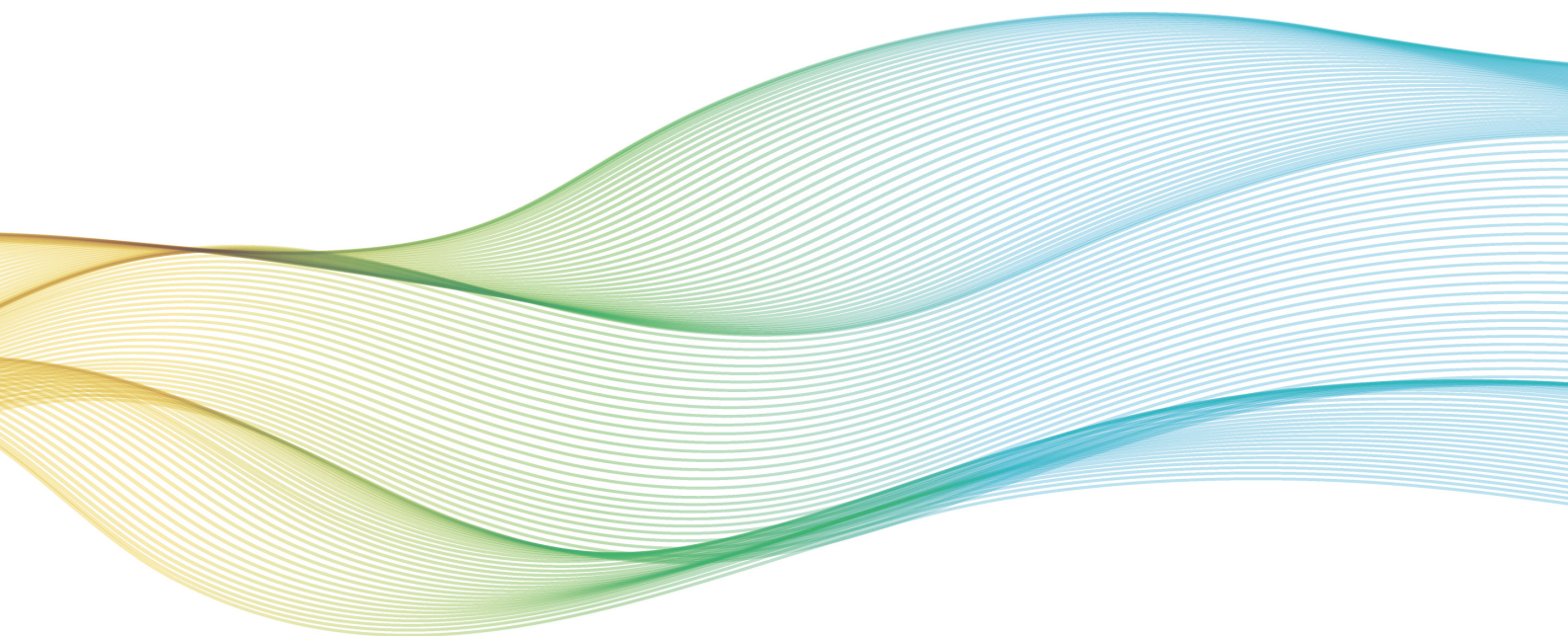


National Advanced Social Organization  
conferred by Ministry of Civil Affairs of China

# About CCCME

China Chamber of Commerce for Import and Export of Machinery and Electronic Products (hereinafter referred to as "CCCME"), founded in 1988, is a national social organization serving the production and import and export trade of China's machinery and electronic products, overseas investment cooperation and related activities. CCCME has over 10,000 member enterprises covering a wide range of industries and the complete supply chains, representing the industry as a whole. It has 21 industry branches, one Expert Committee and 6 working committees.

After years of efforts, CCCME has established close cooperation and frequent contacts with major international industry organizations and large multinational groups. It has committed to building a series of brand service projects through organizing high-end trade and investment promotion activities, facilitating international exchange, improving legal services, conducting exhibitions and other technical services, which are highly recognized by business circles. CCCME has now become an assistant facilitating China's machinery and electronic trade, a bridge connecting outward investment and cooperation, and a platform serving the new development paradigm. In June 2012, CCCME was granted as an AAAAA Grande NGO by Ministry of Civil Affairs of China. It was twice awarded "Outstanding National Social Organization" by Ministry of Civil Affairs in December 2015 and December 2021 respectively.



# CCCME Services

## International Exchanges



CCCME has built a global network by establishing contact and cooperative relationship with over 130 international chambers of commerce and trade associations around the world, over 120 foreign embassies to China and more than 60 overseas industrial parks. It is designated as Secretariats of 10 high-level bilateral or multilateral governmental working mechanisms between China and other countries & regions such as Russia, the U.S., Italy, France, Finland among many others, and it also maintains contacts with over 100 Economic and Commercial Offices of Chinese Embassies to other countries. CCCME organizes more than 180 international fairs, matchmaking meetings, cooperation forums, market investigations and other promotion activities each year. It provides special services for market development in Russian-speaking countries, such as collecting and sending high-quality information on international procurement to members, playing an important role in enabling enterprises to develop overseas market and facilitate business cooperation.

- Connecting with foreign embassies, consulates and associations as well as trade and investment promotion agencies
- Russian-speaking countries' market development service
- International procurement information inquiry and matchmaking services
- APEC Business Travel Card application service

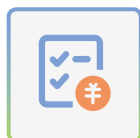
## Industrial Cooperation



Focusing on serving the needs of national strategic layout and the transformation and upgrading of Chinese enterprises' overseas investment cooperation, relying on CCCME Expert Committee, 2023 Conference on International Industrial Cooperation (Singapore), and the Pilot Fund, CCCME has established a new type of international industrial cooperation service mechanism and endeavors to build 5 platforms, namely: a platform bridging government and businesses, a platform facilitating cooperation of the complete industrial chains among various types of enterprises, a platform for customized consulting centered on CCCME Expert Committee and a platform for the construction of international standards, behaviors, norms and new mechanisms, as well as a platform for the cooperation with international organizations and multilateral and bilateral institutions. Through the CCCME Expert Lecture Hall, research on current topics, dialogues between government and enterprises, customized trainings, and high-end consulting, it presents enterprises with accurate and efficient international industrial cooperation services covering the whole industrial, supply chain and the whole value chain.

- Policy communication platform
- Whole industrial chain cooperation platform
- Corporate consulting service platform
- International standards, norms and mechanisms construction platform
- Multi & bilateral industrial cooperation of international organizations (institutions) platform
- Conference on International Industrial Cooperation

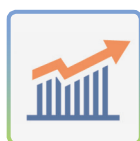
## Investment Promotion



Through the Working Mechanism for Investment to China Overseas Trade and Economic Cooperation Zone, CCCME keeps close contacts with over 60 overseas cooperation zones built by Chinese investors alongside the Belt and Road Initiative countries and with more than 10 cooperation zones. It has also established cooperative relations with more than 80 investment promotion institutions around the globe to carry out overseas investment docking, consulting, market development and risk assessment services. CCCME regularly holds overseas investment seminars and project match-making meetings to build platforms for enterprises' investment cooperation.

- Consulting services for foreign investment cooperation
- Overseas industrial parks investment match-making and market development

## Industry Service



CCCME sets industry standards in accordance with relevant laws, organizes members to sign self-discipline pacts and conducts enterprise credit rating assessment, playing a leading role among industries. CCCME pays close attention to the operation of companies and industries, regularly releases industry analyses and reports them to relevant government departments, functioning as a reliable industry investigator and consultant. CCCME also carries out the notification, review and response with regard to WTO technical trade measures, and provides international standard consulting. It organizes match-making meetings, holds industrially influential activities, safeguards industry interests, and provides professional industry support and promotion services for the import and export of machinery and electronic products, foreign investment cooperation and overseas projects involving large-scale complete set of equipment.

- Safeguarding industry interests and providing industry information and communication platform
- Supporting overseas projects involving large-scale complete sets of equipment
- Query and subscription service for export data on machinery and electronic products
- Enterprise credit rating evaluation
- Export brand recommendation
- Technical trade measures response
- International standard query
- Issuing relevant certificates (export certificate, performance/non violation certificate, and force majeure certificate)



## Legal Service



CCCME has been committed to building an internationally and integrally legal service platform, safeguarding its members' interests overseas. The platform can reach partners from more than 100 countries, regions and nearly 300 cities around the globe. CCCME assists enterprises in responding to trade remedy measures such as anti-dumping, anti-subsidy, safeguard measures together with 337 cases, safeguarding the fair trade. It also provides members with consulting services on corporate affairs, trade disputes, overseas investment and M&A, intellectual property protection etc. It carries out special legal services on export control and compliance consulting among others to prevent corporate risks. It also assists enterprises with overseas business debt collection, in an attempt to reduce their losses. CCCME has also offered the database of enterprises with transaction complaints and transaction integrity, ensuring the safe transaction together with a free database of laws and regulations, so as to meet the information needs of its members.

- Trade frictions response
- Business debt collection
- Transaction integrity consulting
- Export control compliance consulting
- Legal service consulting
- Non-performing transactions complaints
- Legal cases query

## Information Service



CCCME has built a high-end information service system which can provide enterprises with latest, accurate and high-quality information of economic and trade sector, and machinery and electronic industry. CCCME issues daily "Economic and Trade Headlines" and "Industry Headlines" related to economic and trade information, statistical data and analysis report. The "Economic and Trade Headlines" covering foreign exchange exposure, cargo insurance and policy focus will be released on each Tuesday and Friday, the "CCCME Member Spotlight", introducing members brands, experience, new products and technologies, is published regularly through various channels of CCCME official website, "CCCME Economic and Trade Info" on WeChat and other mainstream social media. The latest economic, trade and industry information is also constantly shared among WeChat member groups and through E-mails.

- Economic and trade information services
- Promotion of CCCME members
- CCCME Economic and Trade Info Push Notification

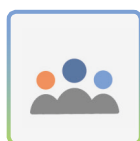
## Exhibition Service



CCCME organizes its members to participate in more than 160 international professional exhibitions throughout the world and hosts machinery and electronic shows in over 10 emerging economies each year. The scale of overseas exhibitions it covers is among the top three domestically and ranks the first in the whole industry. CCCME is also responsible for relevant work of such national-level exhibitions as China Import and Export Fair (Canton fair), China International Import Expo (CIIE), and China International Consumer Products Expo (Hainan Expo). It undertakes relevant work for such exhibitions organized by Ministry of Commerce as China (Shanghai) International Technology Fair (CSITF) and China International Consumer Electronics Exposition (CICE). CCCME cooperates with local governments to host more than 20 professional domestic exhibitions such as Yiwu International Equipment Expo. CCCME actively innovates service model and establishes an online trade promotion platform, namely CCCME Online Exhibition and it also organizes online fairs. It hosts over 5,000 one-to-one online match-making meetings, facilitating enterprises to develop international market and explore new businesses opportunities.

- International exhibitions
- Domestic exhibitions
- CCCME Online Exhibition
- One to One business matchmaking (Online fairs)

## Training Service



Giving full play to its partnership with experts and organizations domestically and internationally in areas of machinery and electronic trade, investment and industrial cooperation, focusing on the pain points and difficult problems encountered in the operation of enterprises, CCCME provides its members with over 50 professional trainings relating to domestic and international economic trends, economic and trade policies, laws and regulations, trade frictions, UN procurement, financial investment, economic and trade practices, project contracting, and service for enterprise "going global". Among those, more than 20 lectures and trainings are presented by CCCME Expert Lecture Hall and CCCME Green and Low-carbon International Cooperation Committee on such topics as outward investment cooperation, compliance risk and green and low-carbon development.

- CCCME Expert Lecture Hall
- Legal Training
- International trade training
- Green and low-carbon training
- Export control compliance training
- Special customized training

## Green Development



To echo China's carbon peaking and carbon neutrality goals, CCCME has established a Green and Low-carbon International Cooperation Committee, dedicated to enhancing government-business dialogues, organizing industry exchange activities, connecting upstream and downstream enterprises, sharing information and facilitating financial cooperation. To offer better services, CCCME establishes a Carbon Neutrality Service Platform this year. CCCME also carries out work related to ESG system construction (standard) guidelines for Chinese overseas investment cooperation enterprises, and provides enterprises with ESG-related services in five aspects, including rating, index, law, carbon trading and green finance. CCCME has built an information exchange platform in the field of green export, with the aim of enhancing the green development and international cooperation of the whole industrial chain of the machinery and electronic industry, promoting the establishment of a green standard system for industries, advocating green foreign trade and lifting the green attribute of export products.

- One-stop Carbon Neutrality Service Platform
- ESG system building and services

## A Bridge between Government and Businesses

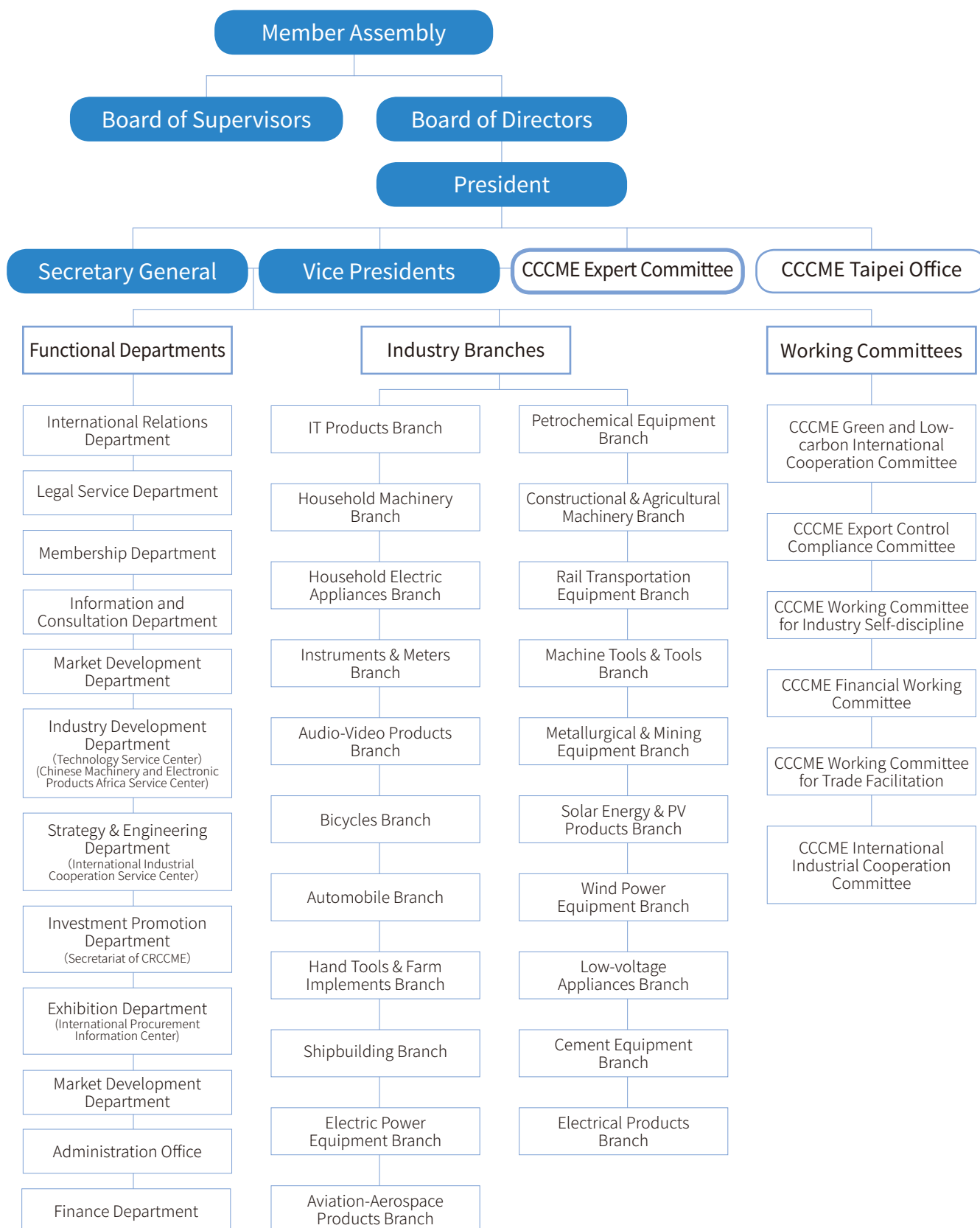


CCCME constantly conducts in-depth investigation and researches on enterprises, understands their difficulties and problems in operation and divides those issues into different categories. In terms of policies issues, CCCME composes and submits research reports, policy advices and government special reports regularly. It is also often invited to attend the trend analysis meetings and symposiums on certain topics organized by Ministry of Commerce and National Development and Reform Commission, timely reflecting enterprises' appeals and demands. In terms of individualized problems of members, CCCME coordinates various channels and resources of government as well as the third-party outward economic and trade organizations, providing members with related services of coordination, guidance, consulting etc. CCCME timely interprets government policies, enables enterprises to enjoy policy dividends and hands in policy feedback to the government. In the meantime, CCCME also undertakes other important projects entrusted by the government with high standards.

- Investigating the difficulties of enterprises
- Reflecting the appeals of enterprises
- Meeting the demands of enterprises
- Interpreting government policies
- Reporting policy effects



# Organizational Structure



# Leadership

## Standing Body

**President:** Zhang Yujing  
**Executive Vice President:** Zheng Chao

**Vice Presidents:** Shi Yonghong, Liu Chun  
**Secretary General:** Guo Kuilong

## CCCME Vice-President Companies

CHINA NATIONAL MACHINERY INDUSTRY  
CORPORATION

CHINA GENERAL TECHNOLOGY (GROUP)  
HOLDING CO., LTD.

CHINA STATE CONSTRUCTION  
ENGINEERING CORPORATION LTD.

POWER CONSTRUCTION CORPORATION OF  
CHINA

CHINA COMMUNICATIONS  
CONSTRUCTION COMPANY LIMITED

CHINA NATIONAL CHEMICAL  
ENGINEERING CO., LTD.

ELINC CHINA CO., LTD.

CHINA ENERGY ENGINEERING  
CORPORATION LIMITED

CRRC CORPORATION LIMITED

DONGFANG ELECTRIC CORPORATION

SHANGHAI ELECTRIC GROUP CO., LTD.

CHINA EXPORT & CREDIT INSURANCE  
CORPORATION

THE EXPORT-IMPORT BANK OF CHINA

HUAWEI TECHNOLOGIES CO., LTD.

ZTE CORPORATION

CHINA NORTH INDUSTRIES CORPORATION

METALLURGICAL CORPORATION OF CHINA  
LIMITED

CHINA NONFERROUS METAL INDUSTRY'S  
FOREIGN ENGINEERING AND  
CONSTRUCTION CO., LTD.

GUANGZHOU INDUSTRIAL INVESTMENT  
HOLDINGS GROUP

HAIER OVERSEAS ELECTRIC APPLIANCES  
CO., LTD.

XUZHOU CONSTRUCTION MACHINERY  
GROUP IMP. & EXP. CO., LTD.

CP GROUP

TBEA CO., LTD.

NINGBO CIXI IMPORT AND EXPORT  
HOLDINGS CO., LTD.

CHINA ELECTRIC POWER EQUIPMENT AND  
TECHNOLOGY CO., LTD.

CHINA TRIUMPH INTERNATIONAL  
ENGINEERING CO., LTD.

CITIC CONSTRUCTION CO., LTD.

AVIC INTERNATIONAL HOLDING  
CORPORATION

CHINA VOLANT INDUSTRY CO., LTD.

MIDEA GROUP CO., LTD.

JA SOLAR TECHNOLOGY CO., LTD.

CONTEMPORARY AMPEREX TECHNOLOGY  
CO., LIMITED

SHANDONG KERUI ENERGY TECHNOLOGY  
CO., LTD.

# Board of Supervisors

**Chief Supervisor:** Tang Qiaoliang, China Harbour Engineering Company Ltd.

**Deputy Chief Supervisor:** Liu Jian, ZTE Corporation.

**Supervisors:** Xin Zhonghua, SUMEC Group Corporation

Wei Feng, China Gezhouba Group International Engineering Co., Ltd.

Huang Yonghong, Shandong Kerui Energy Technology Co., Ltd.

## CCCME Expert Committee

With years of engagement in various industries in both domestic and international markets, CCCME established the Expert Committee (hereafter "the Committee") in March 2021. Gathering over 100 elites and experts of various industry, it aims to serve the national strategic layout and the transformation and upgrading of Chinese enterprises' overseas investment cooperation, while the International Industrial Cooperation Mechanism was also launched. Positioned as "a high-end think tank, a service center and a cooperation platform", it strives to build a high-end consulting service system that is accurate, efficient and valuable, "follows the guidance of the government, leads the development of the industry and closely follows the needs of enterprises", promoting the high quality development of overseas investment cooperation.

Tel: 86-10-58280737/877

E-mail: [zhouxinhui@cccme.org.cn](mailto:zhouxinhui@cccme.org.cn)

# Multi/Bi-lateral Cooperation Mechanisms

## International Cooperation Mechanisms



### **China Russia Chamber of Commerce for Machinery and Electric Products**

Founding Time: November 2007

Supervisory Departments: Ministry of Commerce of China, Minister of Economic Development of Russia

Participants: Enterprises of China and Russia

Secretariats: CCCME, The Russian Union of Industrialists and Entrepreneurs

Tel: 86-10-58280751

E-mail: [crc@cccme.org.cn](mailto:crc@cccme.org.cn)



### **China Provinces and US California Joint Working Group on Trade and Investment Cooperation**

Founding Time: April 2013

Supervisory Departments: Ministry of Commerce of China, US California State Government

Participants: Chinese provinces, California counties

Secretariats: CCCME, LARExC, Bay Area Council

Tel: 86-10-58280869

E-mail: [liuchang@cccme.org.cn](mailto:liuchang@cccme.org.cn)



### **China Provinces and US Michigan Joint Working Group on Trade and Investment Cooperation**

Founding Time: August 2015

Supervisory Departments: Ministry of Commerce of China, US Michigan State Government

Participants: Chinese provinces, US Michigan State

Secretariats: CCCME, Michigan-China Innovation Center

Tel: 86-10-58280867

E-mail: [liuchang@cccme.org.cn](mailto:liuchang@cccme.org.cn)



### **Business Forum Italy-China (BFIC)**

Founding Time: June 2014

Supervisory Departments: Ministry of Commerce of China, Italian Ministry of Economic Development

Participants: Enterprises of China and Italy

Secretariats: CCCME, ITA, CONFINDUSTRIA

Tel: 86-10-58280867

E-mail: [zhaomengyuan@cccme.org.cn](mailto:zhaomengyuan@cccme.org.cn)



### **CICA Business Council**

Founding Time: 2014

Participants: Representatives from business and public organization of CICA Member States

Secretariats: CICA Business Council Chairman Office in CCCME

Tel: 86-10-58280756

E-mail: [crc@cccme.org.cn](mailto:crc@cccme.org.cn)



### **China-Finland Committee for Innovative Business Cooperation**

Founding Time: April 2017

Supervisory Departments: Ministry of Commerce of China, Finnish Ministry of Economic Affairs and Employment

Participants: Enterprises of China and Finland

Secretariats: CCCME, Confederation of Finnish Industries EK, Business Finland

Tel: 86-10-58280863

E-mail: [dengruifeng@cccme.org.cn](mailto:dengruifeng@cccme.org.cn)



### **China-KSA Five-year Action Plan on Mutual Business Visits**

Founding Time: September 2017

Supervisory Departments: Ministry of Commerce of China, KSA Investment Department

Participants: Enterprises of China and KSA

Secretariats: CCCME, SAGIA

Tel: 86-10-58280867

E-mail: [zhaomengyuan@cccme.org.cn](mailto:zhaomengyuan@cccme.org.cn)



### **China-UAE Five-year Action Plan on Mutual Business Visits**

Founding Time: September 2017

Supervisory Departments: Ministry of Commerce of China, UAE Ministry of Economy

Participants: Enterprises of China and UAE

Secretariats: CCCME, Foreign Trade Department of UAE Ministry of Economy

Tel: 86-10-58280872

E-mail: [zhangjing@cccme.org.cn](mailto:zhangjing@cccme.org.cn)





### **China-Algeria Five-year Action Plan on Mutual Business Visits**

Founding Time: January 2018

Supervisory Departments: Ministry of Commerce of China, Ministry of Industry and Mining of Algeria

Participants: Enterprises of China and Algeria

Secretariats: CCCME, Algerian Investment and Development Agency

Tel: 86-10-58280867

E-mail: zhaomengyuan@cccme.org.cn



### **Council of Entrepreneurs France-China (CEFC)**

Founding Time: January 2018

Supervisory Departments:

Participants: Ministry of Commerce of China, French Ministry of Economics and Finance

Secretariats: CCCME, China-France Committee

Tel: 86-10-58280867

E-mail: zhaomengyuan@cccme.org.cn



### **Chinese Secretariat of the China-Uzbekistan Investment Working Group**

Founding Time: 2021

Supervisory Departments: Ministry of Commerce of China, Ministry of Investment, Industry and Trade of the Republic of Uzbekistan

Participants: Governments and enterprises of both China and Uzbekistan

Secretariats: CCCME, General Directorate for Cooperation with the People's Republic of China of MIIT of Uzbekistan

Tel: 86-10-58280752

E-mail: crc@cccme.org.cn

## Professional Committees

---

**CCCME Green and Low-carbon International Cooperation Committee**

Tel: 86-10-58280869

E-mail: liuchang@cccme.org.cn

**CCCME Export Control Compliance Committee**

Tel: 86-10-58280881

E-mail: eccc@cccme.org.cn

**CCCME Working Committee for Industry Self-discipline**

Tel: 86-10-58280879

E-mail: zhangxutao@cccme.org.cn

**CCCME Working Committee for Trade Facilitation**

Tel: 86-10-58280881

E-mail: gaoshiwang@cccme.org.cn

**CCCME Financial Working Committee**

Tel: 86-10-58280847

E-mail: huangmu@cccme.org.cn

**CCCME International Industrial Cooperation Committee**

Tel: 86-10-58280751

E-mail: shengguofei@cccme.org.cn

**CCCME Taipei Office**

Tel: 86-10-5828086

E-mail: zhaomengyuan@cccme.org.cn

# Industry Branches



## Electronic Information Branch

Key products: Communication equipment, electronic computers, electronic components, electronic devices, radio and television equipment, radar equipment, special equipment for electronic industry, electronic measuring instruments, special materials for electronic industry, etc.

Tel: 86-10-58280885 E-mail: [idd@cccme.org.cn](mailto:idd@cccme.org.cn)



## Household Electric Appliances Branch

Key products: Air conditioners, refrigerators, washing machines and other electricity; Electric fan, air purifier and other environmental appliances; Vacuum cleaner, electric iron and other household appliances; Induction cooker, range hood, dishwasher, microwave oven, electric oven and other kitchen appliances; Hair dryer, shaver and other small personal care appliances.

Tel: 86-10-58280897 E-mail: [chea@cccme.org.cn](mailto:chea@cccme.org.cn)



## Consumer Electronics Branch

Key products: Mobile phone, tablet and desktop computer, color TV and other audio and video products, video camera, digital camera image products, video game equipment (including host), VR/AR products, wearable products, set-top boxes, projectors, headphones/plugs, speakers and other accessories.

Tel: 86-10-58280893 E-mail: [elec@cccme.org.cn](mailto:elec@cccme.org.cn)



## Daily Products Branch

Key products: Lighting equipment (lamps, bulbs and tubes, LED bulbs, LED tubes, etc.), clocks, flashlights, faucets, locks (electronic locks) and other daily mechanical and electrical products etc.

Tel: 86-10-58280909 E-mail: [hmac@cccme.org.cn](mailto:hmac@cccme.org.cn)



## Instruments & Meters Branch

Key products: industrial and civil instruments, optical instruments, measuring instruments, cultural office machinery (film, audio-visual education, photography, photocopying, micromachines and equipment), scientific instruments, testing instruments, medical instruments and equipment, safety inspection equipment, etc.

Tel: 86-10-58280881 E-mail: [idd@cccme.org.cn](mailto:idd@cccme.org.cn)



## Automobile Branch

Key products: vehicle, spare parts, new energy and intelligent connected vehicles, the testing and certification for related products and systems of the industrial chain, etc.

Tel: 86-10-58280982 E-mail: [auto@cccme.org.cn](mailto:auto@cccme.org.cn)



## Solar Energy & PV Products Branch

Key products: solar cells and batteries, solar generating units, solar pumps, solar lighting devices, solar PV complementary power generation devices, controllers and inverters for photovoltaic systems and other products and related components.

Tel: 86-10-58280907 E-mail: [solar@cccme.org.cn](mailto:solar@cccme.org.cn)



#### **Low-voltage Appliances Branch**

Key products: low-voltage circuit breakers, fuses, isolators, leakage protectors and other distribution appliances and contactors, relays, master appliances, starters, electromagnets, rheostat and other control appliances and low-voltage switchgear and control equipment.

Tel: 86-10-58280907 E-mail: glvea@cccme.org.cn



#### **Electrical Products Branch**

Key products: motor, power tools, batteries, welding rods, industrial appliances and electrical equipment.

Tel: 86-10-58280907 E-mail: lectrical@cccme.org.cn



#### **Construction & Agricultural Machinery Branch**

Key products: agricultural machinery, grain, oil, agricultural and sideline product processing machinery, marine fishery machinery, horticultural machinery, animal husbandry machinery, construction machinery, environmental cleaning machinery, engineering machinery, spare parts, etc.

Tel: 86-10-58280882 E-mail: amac@cccme.org.cn



#### **Shipbuilding Industry Branch**

Key products: all kinds of ships, marine equipment, floating docks, drilling and production platforms, offshore development equipment, floating structures at sea, port equipment, large steel structures, containers, etc.

Tel: 86-10-58280886 E-mail: shipbuilding@cccme.org.cn



#### **Aviation-Aerospace Products Branch**

Key products: all kinds of civil aircraft, aircraft and spare parts, airborne equipment, aviation ground equipment, space carrier system, space aircraft and spare parts, space ground equipment, satellites and spare parts, etc.

Tel: 86-10-58280891 E-mail: aero@cccme.org.cn



#### **Machine Tools Branch**

Key products: metal cutting machine tool, metal forming (forging) machine tool, special processing machine tool, woodworking machine tool, stone processing machine tool, machine tool accessories, stamping mold, tools and tools, measuring instrument, abrasives, numerical control system and control device, industrial robot, 3D printing equipment, etc.

Tel: 86-10-58280956/882 E-mail: mtool@cccme.org.cn



#### **Two-wheel Vehicle Branch**

Key products: bicycle, electric bicycle, bicycle spare parts, bicycle riding equipment, outdoor supplies, etc.

Tel: 86-10-58280988 E-mail: bike@cccme.org.cn



#### **Tools Branch**

Key products: all kinds of tools (hand tools, power tools, pneumatic tools, garden machinery, labor protection supplies, etc.); All kinds of farm implements (axe, hoe, spade, fork, harrow, knife, scissors, pick, garden tools, etc.)

Tel: 86-10-58280939 E-mail: etool@cccme.org.cn



#### **Electric Power Equipment Branch**

Key products/engineering projects: generator sets, power transmission and transformation equipment and distribution devices and related supporting equipment, and engineering projects with the equipment as functional core or finished products.

Tel: 86-10-58280877 E-mail: liyawei@cccme.org.cn



#### **Wind Power Equipment Branch**

Key products/engineering projects: wind turbine sets, transmissions, tower barrels, blades and other components, and engineering projects with these equipment as functional core or finished products.

Tel: 86-10-58280877 Email: liyawei@cccme.org.cn



#### **Rail Transportation Equipment Branch**

Key products/engineering projects: all kinds of railway locomotives, freight cars, communication signal equipment, and steel structure, sleeper, bridge, detection car and other related equipment, and these equipment as the functional core or finished product engineering projects.

Tel: 86-10-58280847 E-mail: huangmu@cccme.org.cn



#### **Petrochemical Equipment Branch**

Key products/engineering projects: complete sets of equipment and related supporting equipment used in oil refinery, chemical plant, fertilizer plant, pesticide plant, oil and gas field construction, liquefied natural gas, and engineering projects with the equipment as functional core or finished products.

Tel: 86-10-58280872 E-mail: zhangjing@cccme.org.cn



#### **Metallurgical & Mining Equipment Branch**

Key products/engineering projects: complete sets of facilities for ferrous/non-ferrous metal smelting and processing, complete sets of facilities for metal/non-metallic mine construction and related supporting equipment, and engineering projects with these facilities as functional core or finished products.

Tel: 86-10-58280737 E-mail: zhouxinhui@cccme.org.cn



#### **Cement Equipment Branch**

Key products/engineering projects: cement glass plasterboard and other building material production lines, complete sets of equipment and related supporting equipment used in cement kiln waste heat power plant, and engineering projects with the equipment as functional core or finished products.

Tel: 86-10-58280847 E-mail: huangmu@cccme.org.cn

**China Chamber of Commerce for Import and Export of Machinery and Electronic Products**

<https://www.cccme.org.cn>

Tel: +86-10-58280863 +86-10-58280869

Fax: +86-10-58280810 +86-10-58280820

E-mail: [member@cccme.org.cn](mailto:member@cccme.org.cn) (domestic) [international@cccme.org.cn](mailto:international@cccme.org.cn) (overseas)

Add: 8th Fl., Office Tower 2, No.18, Jianguomennei Street, Dongcheng Dist. Beijing 100005

**中国机电产品进出口商会**

网址: <https://www.cccme.org.cn>

电话: +86-10-58280836 +86-10-58280833

传真: +86-10-58280810 +86-10-58280820

邮箱: [member@cccme.org.cn](mailto:member@cccme.org.cn) (国内) [international@cccme.org.cn](mailto:international@cccme.org.cn) (国际)

地址: 北京市东城区建国门内大街18号(恒基中心)办公楼2座8层(100005)

