

CHINA CHAMBER OF COMMERCE FOR IMPORT AND EXPORT OF
MACHINERY AND ELECTRONIC PRODUCTS

中国机电产品进出口商会



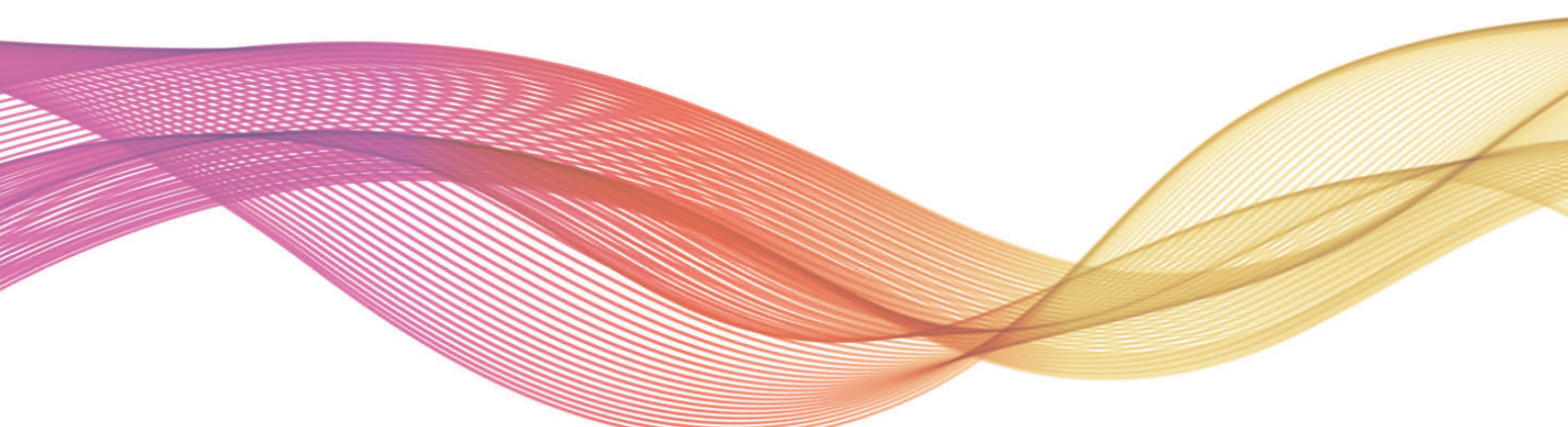
Maior Achievements



A 5A-level social organization
graded by Ministry of Civil Affairs of China



National Advanced Social Organization
conferred by Ministry of Civil Affairs of China



About CCCME

The China Chamber of Commerce for Import and Export of Machinery and Electronic Products (hereinafter referred to as "CCCME"), founded in 1988, is a national social organization dedicated to serving the production and import-export trade of China's machinery and electronic products, overseas investment cooperation and related activities. CCCME has over 10,000 member enterprises spanning a wide range of industries and the complete supply chains, representing the industry as a whole. It comprises 22 industry branches, seven working committees and one working group.

After years of efforts, CCCME has established close cooperation and frequent contact with major international industry organizations and large multinational groups. It is committed to building a series of brand service projects on high-end outbound investment promotion, international industry cooperations, legal support, exhibitions and various technical services, which are highly recognized by the business community. CCCME has now become a platform for effectively promoting China's machinery and electronic trade and a bridge connecting outward investment and cooperation, serving the new development paradigm. In June 2012, CCCME was recognized as an AAAAA Grade NGO by the Ministry of Civil Affairs of China. Additionally, it was twice awarded the title of "Outstanding National Social Organization" by the Ministry of Civil Affairs in December 2015 and December 2021 respectively.



CCCME Services

International Exchanges



CCCME has established a global network of international connections, linking with over 130 international chambers and associations of commerce and trade, more than 120 foreign embassies in China and over 60 overseas industrial parks. It is designated as the Secretariat of 10 national-level bilateral and multilateral business cooperation mechanisms, including those between China and Russia, and China and the United States. It also maintains regular communication with over 100 Economic and Commercial Offices of Chinese Embassies abroad. CCCME organizes over 180 international fairs, matchmaking meetings, cooperation forums, market investigations and other exchange activities between Chinese and foreign enterprises each year. It provides special services for market development in Russian-speaking countries, such as collecting and sending high-quality information on international procurement to members, playing an important role in enabling enterprises to develop overseas market, discover new opportunities and facilitate business cooperation.

- Connecting with foreign embassies, consulates and associations as well as trade and investment promotion agencies
- Russian-speaking countries' market development services
- International procurement information inquiry and matchmaking services

Industrial Cooperation



To meet the needs of national strategic layout and the transformation and upgrading of Chinese enterprises' overseas investment cooperation, relying on CCCME Expert Committee and the Conference on International Industrial Cooperation (Singapore), CCCME has established a new type of international industrial cooperation service mechanism, focusing on building up five key service platforms, namely: a platform bridging government and businesses, a platform for cooperations among enterprises, a customized consulting services platform for enterprises, a platform for the development of international standards, norms and rules, and a platform for cooperation among multilateral and bilateral international organizations. Focusing on topics like green low-carbon development and the integration of industry and education, CCCME offers a full range of services for international industry cooperation through consulting services, specialized training, research projects, professional delegations, and conferences. These efforts support enterprises with comprehensive services across the entire industry and value chains.

- Conference on International Industrial Cooperation
- Platform for Government-Enterprise Communication and Exchange
- Platform for Inter-Enterprise Cooperation
- Customized Consulting Service Platform for Enterprises
- Platform for International Standards, Norms, and Rules Development
- Platform for Multilateral and Bilateral International Organization Cooperation

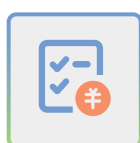
Investment Promotion



Through the Working Mechanism for Investment in China Overseas Trade and Economic Cooperation Zone, CCCME maintains close working relationships with over 60 overseas cooperation zones built by Chinese investors in countries along the Belt and Road Initiative, as well as with more than 10 self-established cooperation zones in these countries. It has also formed cooperative relations with more than 80 investment promotion institutions around the globe to provide overseas investment matchmaking, consulting, market development and risk assessment services. CCCME also regularly holds overseas investment seminars and project matchmaking meetings to build platforms for enterprises' investment cooperation.

- Consulting services for foreign investment cooperation
- Overseas industrial parks investment matchmaking and market development

Industry Services



CCCME sets industry standards in compliance with relevant laws, organizes members to sign self-discipline pacts and conducts enterprise credit rating assessments, playing a leading role within the industry. CCCME closely monitors the performance of companies and industries, regularly releases industry analyses, and reports them to relevant government departments, acting as a reliable investigator and consultant. CCCME also manages the notifications, reviews and responses related to WTO technical trade measures, while providing consulting services on international standards. Additionally, it organizes matchmaking meetings, hosts influential industrial events, safeguards industry interests, and provides specialized support and promotion services focusing on the import and export of machinery and electronic products, overseas investment and cooperation, export of large-scale equipment and complete sets of machinery, and overseas turnkey engineering projects.

- Safeguarding industry interests and providing industry information and communication platform
- Supporting export of large-scale equipment and complete sets of machinery, and overseas turnkey engineering projects
- Query and subscription service for export data on machinery and electronic products
- Enterprise credit rating evaluation
- Export brand recommendation
- Technical trade measures response
- International standard query
- Issuing relevant certificates (export certificate, performance/non violation certificate, and force majeure certificate)

Legal Services



CCCME has been committed to building a comprehensive international legal service platform to safeguard its members' interests overseas. The platform can reach partners from more than 100 countries and regions and nearly 300 cities around the globe. CCCME assists enterprises in responding to investigations related to anti-dumping, countervailing, safeguard investigations, and Section 337 cases, striving to ensure fair trade practices. It also provides members with consulting services on corporate affairs, trade disputes, overseas investment and M&A, intellectual property protection, etc. Specialized legal services, such as export control and compliance consulting, are offered to help enterprises mitigate risks. CCCME also supports businesses with overseas debt collection to minimize their losses. Furthermore, CCCME maintains a database of enterprises with transaction complaints and transaction integrity issues, promoting safe transactions. A free database of laws and regulations is also available to meet members' information needs.

-
- Trade friction response
 - Business debt collection
 - Transaction integrity consulting
 - Legal case inquiries
 - Export control compliance consulting
 - Legal service consulting
 - Non-performing transaction complaints

Information Services



CCCME developed a high-end information service system to provide enterprises with the latest, accurate, and high-quality information on the economic and trade sector, as well as the machinery and electronics industry. CCCME regularly issues "Economic and Trade Headlines" and "Industry Headlines" covering economic and trade information, statistical data and analysis reports. The "Economic and Trade Headlines," featuring topics such as foreign exchange exposure, cargo insurance, and policy updates, are issued every Tuesday and Friday. The "CCCME Member Spotlight", which highlights members' brands, experiences, new products, and technologies, is published regularly through various channels, including the CCCME official website, "CCCME Economic and Trade Info" WeChat Official Account and Mini Program, as well as other mainstream social media. Additionally, the latest economic, trade and industry updates are continuously shared with members via WeChat groups and emails.

-
- Economic and trade information services
 - Promotion of CCCME members
 - CCCME Economic and Trade Info push notification

Exhibition Services



CCCME organizes its members to participate in more than 160 international professional exhibitions throughout the world and hosts machinery and electronic shows in over 10 emerging economies each year. The scale of overseas exhibitions it manages ranks among the top three domestically and holds the leading position in the industry. CCCME is responsible for key national-level exhibitions such as the China Import and Export Fair (Canton Fair), China International Import Expo (CIIE), and China International Consumer Products Expo (Hainan Expo). It also undertakes work for exhibitions organized by the Ministry of Commerce, including the China (Shanghai) International Technology Fair (CSITF) and China International Consumer Electronics Exposition (CICE). In cooperation with local governments, CCCME hosts over 20 domestic professional exhibitions, such as the Yiwu International Equipment Expo. In addition, CCCME actively innovates its service model by establishing an online trade promotion platform—CCCME Online Exhibition and organizing online fairs. It hosts over 5,000 one-to-one online matchmaking meetings, helping enterprises expand into international markets and explore new business opportunities.

- International exhibitions
- Domestic exhibitions
- CCCME Online Exhibition
- One-to-one business matchmaking (online fairs)

Training Services



Leveraging its partnership with experts and organizations both domestically and internationally in the fields of machinery and electronics trade, investment, and industrial cooperation, CCCME provides its members with over 50 professional training sessions annually. These sessions address the challenges and critical issues enterprises face in their operations. Topics include domestic and international economic trends, economic and trade policies, laws and regulations, trade frictions, UN procurement, financial investment, economic and trade practices, project contracting, and strategies for enterprise "going global". Among these, more than 40 lectures and training sessions are delivered through the CCCME Expert Lecture Hall and the CCCME Green and Low-carbon International Cooperation Committee on areas such as outward investment cooperation, compliance risk and green and low-carbon development.

- CCCME Expert Lecture Hall
- Legal training
- International trade training
- Green and low-carbon training
- Export control compliance training
- Special customized training

Green Development



In support of China's carbon peaking and carbon neutrality goals, CCCME has established the Green and Low-carbon International Cooperation Committee, dedicated to fostering government-business dialogue, organizing industry exchange activities, connecting upstream and downstream enterprises, sharing information and facilitating financial cooperation. To enhance its services, CCCME launched the Carbon Neutrality Service Platform this year. Additionally, CCCME undertakes work related to the development of ESG (Environmental, Social, and Governance) system construction guidelines for Chinese enterprises engaged in overseas investment and cooperation. It provides ESG-related services in five key areas: rating, index, legal compliance, carbon trading, and green finance. CCCME has also created an information exchange platform for green export to drive green development and international across the entire machinery and electronics industry chain. This initiative promotes the establishment of industry-specific green standards, advocates for green foreign trade, and enhances the green attributes of export products.

- One-stop Carbon Neutrality Service Platform
- ESG system construction and services

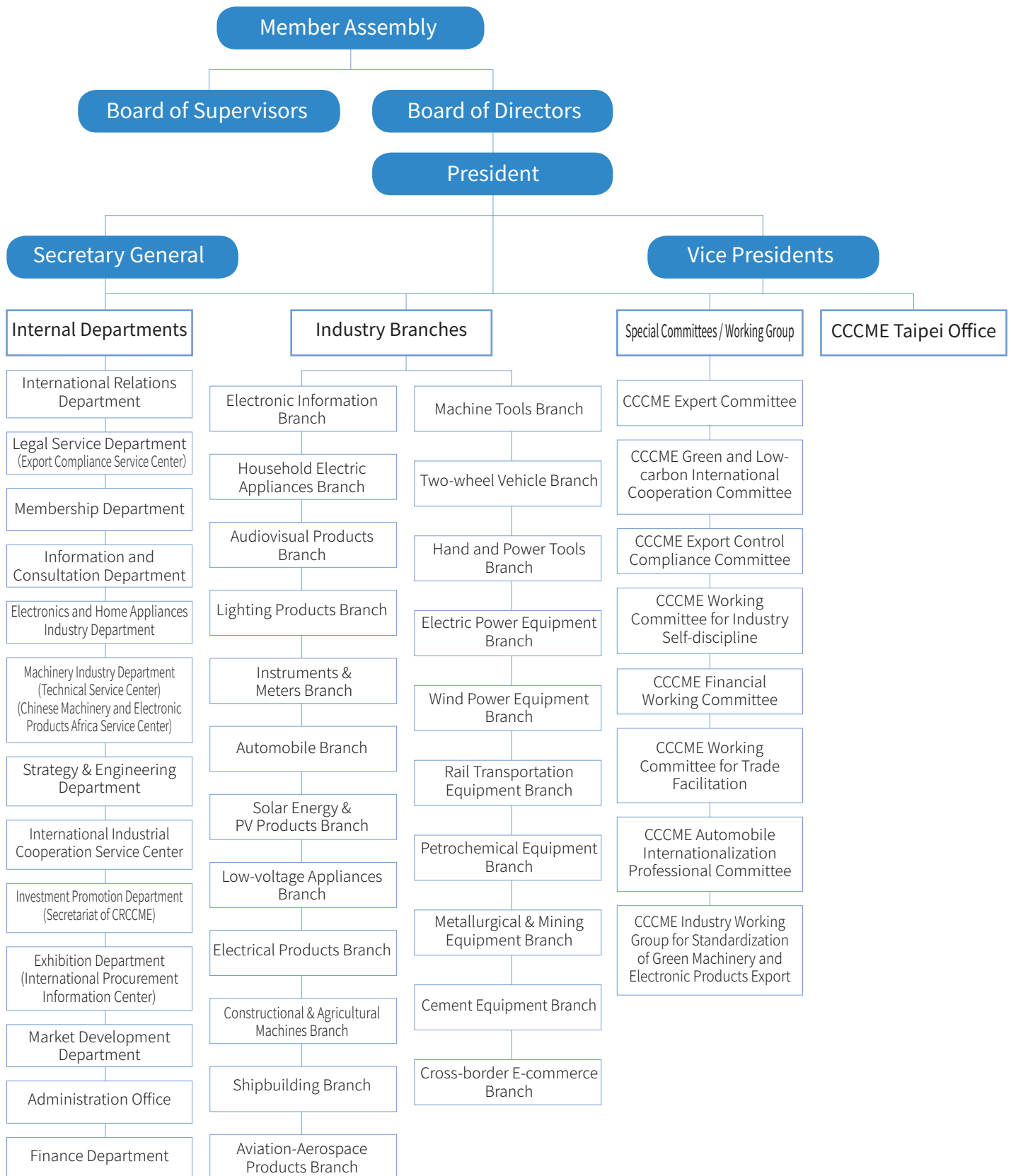
A Bridge between Government and Businesses



CCCME conducts in-depth research on enterprises to understand the difficulties and challenges they encounter in their operations and then analyzes and categorizes these issues. It prepares industry operation reports, specialized research papers, and government briefings. The Chamber is also invited to attend situation analysis meetings and thematic seminars organized by departments such as the Ministry of Commerce and the National Development and Reform Commission. In these forums, CCCME presents business demands and offers industry recommendations to the government. Additionally, CCCME coordinates resources from relevant government departments, financial and insurance institutions, and third-party foreign trade service organizations to provide coordination, guidance, consulting, and services. It promptly offers professional interpretations of government policies, helping enterprises fully benefit from policy incentives and providing feedback to the government on the effectiveness of policy implementation. CCCME also undertakes and successfully completes government-commissioned projects to high standards.

- Investigating the difficulties of enterprises
- Reflecting the appeals of enterprises
- Interpreting government policies
- Serving the industry's steady and sustainable expansion overseas.

Organizational Structure



Leadership

Leaders

President: Zhang Yujing

Vice Presidents: Zheng Chao (Executive) , Shi Yonghong, Liu Chun, Bai Xuefeng

Secretary General: Guo Kuilong

CCCME Vice-President Companies (in no particular order)

CHINA NATIONAL MACHINERY
INDUSTRY CORPORATION

CHINA GENERAL TECHNOLOGY (GROUP)
HOLDING CO., LTD.

CHINA STATE CONSTRUCTION
ENGINEERING CORPORATION LTD.

POWER CONSTRUCTION CORPORATION
OF CHINA

CHINA COMMUNICATIONS
CONSTRUCTION COMPANY LIMITED

CHINA NATIONAL CHEMICAL
ENGINEERING CO., LTD.

ELINC CHINA CO., LTD.

CHINA ENERGY ENGINEERING
CORPORATION LIMITED

CRRC CORPORATION LIMITED

DONGFANG ELECTRIC CORPORATION

SHANGHAI ELECTRIC GROUP CO., LTD.

CHINA EXPORT & CREDIT INSURANCE
CORPORATION

THE EXPORT-IMPORT BANK OF CHINA

HUAWEI TECHNOLOGIES CO., LTD.



ZTE CORPORATION

CEE International Company Limited

CHINA NORTH INDUSTRIES CORPORATION

METALLURGICAL CORPORATION OF CHINA
LIMITED

CHINA NONFERROUS METAL INDUSTRY'S
FOREIGN ENGINEERING AND
CONSTRUCTION CO., LTD.

GUANGZHOU INDUSTRIAL INVESTMENT
HOLDINGS GROUP

HAIER OVERSEAS ELECTRIC APPLIANCES
CO., LTD.

XUZHOU CONSTRUCTION MACHINERY
GROUP IMP. & EXP. CO., LTD.

CP GROUP

TBEA CO., LTD.

NINGBO CIXI IMPORT AND EXPORT
HOLDINGS CO., LTD.

CHINA ELECTRIC POWER EQUIPMENT AND
TECHNOLOGY CO., LTD.

CHINA TRIUMPH INTERNATIONAL
ENGINEERING CO., LTD.

CITIC CONSTRUCTION CO., LTD.

AVIC INTERNATIONAL HOLDING
CORPORATION

CHINA VOLANT INDUSTRY CO., LTD.

MIDEA GROUP CO., LTD.

JA SOLAR TECHNOLOGY CO., LTD.

CONTEMPORARY AMPEREX TECHNOLOGY
CO., LIMITED

SHANDONG KERUI HUIZHENG ENERGY
TECHNOLOGY CO., LTD.

Board of Supervisors

Chief Supervisor: Tang Qiaoliang, China Communications Construction Company Ltd.

Deputy Chief Supervisor: Liu Jian, ZTE Corporation.

Supervisors: Xin Zhonghua, SUMEC Group Corporation

Wei Feng, China Gezhouba Group International Engineering Co., Ltd.

Huang Yonghong, Shandong Kerui Huizheng Energy Technology Co., Ltd.

Special Committees/Working Group

CCCME Expert Committee

Tel: 86-10-58280737/877

E-mail: iicsc@cccme.org.cn

CCCME Green and Low-carbon International Cooperation Committee

Tel: 86-10-58280869

E-mail: green @cccme.org.cn

CCCME Export Control Compliance Committee

Tel: 86-10-58280856

E-mail: eccc@cccme.org.cn

CCCME Working Committee for Industry Self-discipline

Tel: 86-10-58280879

E-mail: engineering @cccme.org.cn

CCCME Working Committee for Trade Facilitation

Tel: 86-10-58280881

E-mail: eccc@cccme.org.cn

CCCME Financial Working Committee

Tel: 86-10-58280876

E-mail: engineering@cccme.org.cn

CCCME Automobile Internationalization Professional Committee

Tel: 86-10-58280891

E-mail: auto@cccme.org.cn

Industry Working Group for Standardization of Green Machinery and Electronic Products Export

Tel: 86-10-58280844

E-mail: gs@cccme.org.cn

CCCME Taipei Office

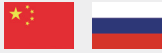
Tel: 86-10-58280867

E-mail: international@cccme.org.cn



Multi/Bi-lateral Cooperation Mechanisms

International Cooperation Mechanisms



China Russia Chamber of Commerce for Machinery and Electric Products

Founding Time: November 2007

Supervisory Departments: Ministry of Commerce of China, Minister of Economic Development of Russia

Participants: Enterprises of China and Russia

Secretariats: CCCME, The Russian Union of Industrialists and Entrepreneurs

Tel: 86-10-58280751

E-mail: crc@cccme.org.cn



China Provinces and US California Joint Working Group on Trade and Investment Cooperation

Founding Time: April 2013

Supervisory Departments: Ministry of Commerce of China, US California State Government

Participants: Chinese provinces, California counties

Secretariats: CCCME, LARExC, Bay Area Council

Tel: 86-10-58280869

E-mail: international@cccme.org.cn



China Provinces and US Michigan Joint Working Group on Trade and Investment Cooperation

Founding Time: August 2015

Supervisory Departments: Ministry of Commerce of China, US Michigan State Government

Participants: Chinese provinces, US Michigan State

Secretariats: CCCME, Michigan-China Innovation Center

Tel: 86-10-58280869

E-mail: international@cccme.org.cn



Business Forum Italy-China (BFIC)

Founding Time: June 2014

Supervisory Departments: Ministry of Commerce of China, Italian Ministry of Economic Development

Participants: Enterprises of China and Italy

Secretariats: CCCME, ITA, CONFINDUSTRIA

Tel: 86-10-58280863

E-mail: international@cccme.org.cn





CICA Business Council

Founding Time: 2014

Participants: Representatives from business and public organization of CICA Member States

Secretariats: CICA Business Council Chairman Office in CCCME

Tel: 86-10-58280756

E-mail: crc@cccme.org.cn



China-Finland Committee for Innovative Business Cooperation

Founding Time: April 2017

Supervisory Departments: Ministry of Commerce of China, Finnish Ministry of Economic Affairs and Employment

Participants: Enterprises of China and Finland

Secretariats: CCCME, Confederation of Finnish Industries EK, Business Finland

Tel: 86-10-58280863

E-mail: international@cccme.org.cn



China-KSA Five-year Action Plan on Mutual Business Visits

Founding Time: September 2017

Supervisory Departments: Ministry of Commerce of China, KSA Investment Department

Participants: Enterprises of China and KSA

Secretariats: CCCME, SAGIA

Tel: 86-10-58280865

E-mail: international@cccme.org.cn



China-UAE Five-year Action Plan on Mutual Business Visits

Founding Time: September 2017

Supervisory Departments: Ministry of Commerce of China, UAE Ministry of Economy

Participants: Enterprises of China and UAE

Secretariats: CCCME, Foreign Trade Department of UAE Ministry of Economy

Tel: 86-10-58280872

E-mail: engineering@cccme.org.cn



China-Algeria Five-year Action Plan on Mutual Business Visits

Founding Time: January 2018

Supervisory Departments: Ministry of Commerce of China, Ministry of Industry and Mining of Algeria

Participants: Enterprises of China and Algeria

Secretariats: CCCME, Algerian Investment and Development Agency

Tel: 86-10-58280865

E-mail: international@cccme.org.cn



Council of Entrepreneurs France-China (CEFC)

Founding Time: January 2018

Supervisory Departments:

Participants: Ministry of Commerce of China, Ministry of the Economy, Finance and Industrial and Digital Sovereignty of France

Secretariats: CCCME, China-France Committee

Tel: 86-10-58280867

E-mail: international@cccme.org.cn



Chinese Secretariat of the China-Uzbekistan Investment Working Group

Founding Time: 2021

Supervisory Departments: Ministry of Commerce of China, Ministry of Investment, Industry and Trade of the Republic of Uzbekistan

Participants: Governments and enterprises of both China and Uzbekistan

Secretariats: CCCME, General Directorate for Cooperation with the People's Republic of China of MIIT of Uzbekistan

Tel: 86-10-58280756

E-mail: crc@cccme.org.cn



Industry Branches



Electronic Information Branch

Key products: Communication equipment, electronic computers, electronic components, electronic devices, radio and television equipment, radar equipment, special equipment for electronic industry, electronic measuring instruments, special materials for electronic industry, etc.

Tel: 86-10-58280885 **E-mail:** idd@cccme.org.cn



Household Electric Appliances Branch

Key products: Air conditioners, refrigerators, washing machines and other electricity; Electric fan, air purifier and other environmental appliances; Vacuum cleaner, electric iron and other household appliances; Induction cooker, range hood, dishwasher, microwave oven, electric oven and other kitchen appliances; Hair dryer, shaver and other small personal care appliances.

Tel: 86-10-58280897 **E-mail:** chea@cccme.org.cn



Audiovisual Products Branch

Key products: Mobile phone, tablet and desktop computer, color TV and other audio and video products, video camera, digital camera image products, video game equipment (including host), VR/AR products, wearable products, set-top boxes, projectors, headphones/plugs, speakers and other accessories.

Tel: 86-10-58280893 **E-mail:** elec@cccme.org.cn



Lighting Products Branch

Key products: Lighting Products (lamps, bulbs and tubes, LED bulbs, LED tubes, etc.)

Tel: 86-10-58280909 **E-mail:** hmac@cccme.org.cn



Instruments & Meters Branch

Key products: industrial and civil instruments, optical instruments, measuring instruments, cultural office machinery (film, audio-visual education, photography, photocopying, micromachines and equipment), scientific instruments, testing instruments, medical instruments and equipment, safety inspection equipment, etc.

Tel: 86-10-58280881 **E-mail:** idd@cccme.org.cn



Automobile Branch

Key products: vehicle, spare parts, new energy and intelligent connected vehicles, the testing and certification for related products and systems of the industrial chain, etc.

Tel: 86-10-58280982 **E-mail:** auto@cccme.org.cn



Solar Energy & PV Products Branch

Key products: solar cells and batteries, solar generating units, solar pumps, solar lighting devices, solar PV complementary power generation devices, controllers and inverters for photovoltaic systems and other products and related components.

Tel: 86-10-58280907/985 **E-mail:** solar@cccme.org.cn



Low-voltage Appliances Branch

Key products: low-voltage circuit breakers, fuses, isolators, leakage protectors and other distribution appliances and contactors, relays, master appliances, starters, electromagnets, rheostat and other control appliances and low-voltage switchgear and control equipment.

Tel: 86-10-58280901/905 **E-mail:** glvea@cccme.org.cn



Electrical Products Branch

Key products: motor, power tools, batteries, welding rods, industrial appliances and electrical equipment.

Tel: 86-10-58280901/905 **E-mail:** lectrical@cccme.org.cn



Constructional & Agricultural Machines Branch

Key products: earth-moving, mixing and batching, road construction, lifting, rock drilling, piling machinery, elevators, industrial vehicles, and other construction equipment. Agricultural power machinery, tillage and harvesting equipment, grain processing machinery, poultry and livestock farming machinery, horticultural machinery, agricultural vehicles, and more.

Tel: 86-10-58280882/874 **E-mail:** amac@cccme.org.cn



Shipbuilding Branch

Key products: all kinds of ships, marine equipment, floating docks, drilling and production platforms, offshore development equipment, floating structures at sea, port equipment, large steel structures, containers, etc.

Tel: 86-10-58280886/882 **E-mail:** shipbuilding@cccme.org.cn



Aviation-Aerospace Products Branch

Key products: all kinds of civil aircraft, aircraft and spare parts, airborne equipment, aviation ground equipment, space carrier system, space aircraft and spare parts, space ground equipment, satellites and spare parts, etc.

Tel: 86-10-58280891 **E-mail:** aero@cccme.org.cn



Machine Tools Branch

Key products: Metal cutting machine tools, metal forming machine tools, special processing machine tools, woodworking machine tools, stone processing machine tools, machine tool accessories, stamping forming molds, cutting tools, measuring tools, abrasive material, numerical control system and control devices, industrial robots, 3d printing equipment, etc.

Tel: 86-10-58280955/882 **E-mail:** mtool@cccme.org.cn



Two-wheel Vehicle Branch

Key products: bicycle, electric bicycle, bicycle spare parts, bicycle riding equipment, outdoor supplies, etc.

Tel: 86-10-58280988/901 **E-mail:** bike@cccme.org.cn



Hand and Power Tools Branch

Key products: all kinds of tools (hand tools, power tools, pneumatic tools, garden machinery, labor protection supplies, etc.); All kinds of farm implements (axe, hoe, spade, fork, harrow, knife, scissors, pick, garden tools, etc.)

Tel: 86-10-58280939 **E-mail:** etool@cccme.org.cn



Electric Power Equipment Branch

Key products/engineering projects: generator sets, power transmission and transformation equipment and distribution devices and related supporting equipment, and engineering projects with the equipment as functional core or finished products.

Tel: 86-10-58280879 **E-mail:** engineering@cccme.org.cn



Wind Power Equipment Branch

Key products/engineering projects: wind turbine sets, transmissions, tower barrels, blades and other components, and engineering projects with these equipment as functional core or finished products.

Tel: 86-10-58280879 **E-mail:** engineering@cccme.org.cn



Rail Transportation Equipment Branch

Key products/engineering projects: all kinds of railway locomotives, freight cars, communication signal equipment, and steel structure, sleeper, bridge, detection car and other related equipment, and these equipment as the functional core or finished product engineering projects.

Tel: 86-10-58280879 **E-mail:** engineering@cccme.org.cn



Petrochemical Equipment Branch

Key products/engineering projects: complete sets of equipment and related supporting equipment used in oil refinery, chemical plant, fertilizer plant, pesticide plant, oil and gas field construction, liquefied natural gas, and engineering projects with the equipment as functional core or finished products.

Tel: 86-10-58280872 **E-mail:** engineering@cccme.org.cn



Metallurgical & Mining Equipment Branch

Key products/engineering projects: complete sets of facilities for ferrous/non-ferrous metal smelting and processing, complete sets of facilities for metal/non-metallic mine construction and related supporting equipment, and engineering projects with these facilities as functional core or finished products.

Tel: 86-10-58280872 **E-mail:** engineering@cccme.org.cn



Cement Equipment Branch

Key products/engineering projects: cement glass plasterboard and other building material production lines, complete sets of equipment and related supporting equipment used in cement kiln waste heat power plant, and engineering projects with the equipment as functional core or finished products.

Tel: 86-10-58280872 **E-mail:** engineering@cccme.org.cn



Cross-border E-commerce Branch

Key products: cross-border e-commerce enterprises, cross-border e-commerce service providers (platforms, independent websites, marketing, logistics, overseas warehouses, payment, legal services, compliance, customs, taxation, foreign exchange, trade credit insurance, intellectual property, etc.).

Tel: 86-10-58280844 **E-mail:** cbec@cccme.org.cn

Internal Departments

International Relations Department

Tel: 86-10-58280863/867/869

E-mail: international@cccme.org.cn

Legal Service Department (Export Compliance Service Center)

Tel:

Legal Service Department : 86-10-58280856/850

Export Compliance Service Center: 86-10-58280858

E-mail:

Legal Service Department: law@cccme.org.cn

Export Compliance Service Center: ecsc@cccme.org.cn

Membership Department

Tel: 86-10-58280836

E-mail: member@cccme.org.cn

Information and Consultation Department

Tel: 86-10-58280923

E-mail: information@cccme.org.cn

Electronics and Home Appliances Department

Tel:

Electronic information, instruments and meters: 86-10-58280885

Household electric appliances: 86-10-58280897

Audiovisual Products: 86-10-58280893

Lighting Products: 86-10-58280909

Aviation-Aerospace Products: 86-10-58280891

Cross Border E-commerce: 86-10-58280844

Industry Working Group for Standardization of Green Machinery and Electronic Products Export: 86-10-58280844

E-mail:

Electronics and Home Appliances Department: eha@cccme.org.cn

Industry Working Group for Standardization of Green Machinery and Electronic Products Export: gs@cccme.org.cn

Machinery Industry Department

(Technology Service Center, Chinese Machinery and Electronic Products Africa Service Center)

Tel:

Automobile: 86-10-58280891/892

Solar energy & PV products: 86-10-58280907/985

Constructional & Agricultural Machinery 86-10-58280882/874

Shipbuilding: 86-10-58280886/882

Machine tools: 86-10-58280955/882

Two-wheel vehicles: 86-10-58280988/901

Low voltage appliances and electrical Products: 86-10-58280905/901

Machine tools: 86-10-58280939

Technology Service Center: 86-10-58280982

African Service Center of China Machinery and Electronic Products: 86-10-58280882

E-mail:

Machinery Industry Department: machinery@cccme.org.cn

Technology Service Center: tsc@cccme.org.cn

African Service Center of China Machinery and Electronic Products: amac@cccme.org.cn



Strategy & Engineering Department**Tel:**

Electric power equipment, wind power equipment, rail transportation: 86-10-58280879

Petrochemical equipment, petrochemical equipment, cement equipment: 86-10-58280872

other equipment: 86-10-58280872

E-mail: engineering@cccme.org.cn

International Industrial Cooperation Service Center

Tel: 86-10-58280737/877

E-mail: iicsc@cccme.org.cn

Investment Promotion Department

Tel: 86-10-58280751

E-mail: investpro@cccme.org.cn

Exhibition Department (International Procurement Information Center)**Tel:**

Exhibition Department: 86-10-58280974/949/973/988/962/957/945

International Procurement Information Center: 86-10-58280954

E-mail:

Exhibition Department: exhi@cccme.org.cn

International Procurement Information Center: ipic@cccme.org.cn

Market Development Department

Tel: 86-10-58280778

E-mail: meexpo@cccme.org.cn

Administration Office

Tel: 86-10-58280809

E-mail: office@cccme.org.cn

Finance Department

Tel: 86-10-58280826

E-mail: finance@cccme.org.cn

How to Become a Member of CCCME

Welcome to join China Chamber of Commerce for Import and Export of Machinery and Electronic Products as a member.

All enterprises, public institutions, social organizations and individuals registered in China and engaged in the production, trade, scientific research, services, foreign investment cooperation and related activities may voluntarily apply for membership in CCCME, and join corresponding professional branches according to the scope of commodities they are engaged in.

Membership process:

1. Log in to the website of CCCME (www.cccme.org.cn) and enter the page of “I Want to Join” ;
2. Submit the following electronic materials online:
 - (1) Registration Form for membership of CCCME;
 - (2) Business License of Enterprise Legal Person issued by the Administration for Industry and Commerce (scan copy);
3. Pay the membership fee after receiving the email of “Notice of Approval for Membership” ;
4. Received the “Membership Card” and “Uniform Bill of National Social Organization Membership Fee” sent by CCCME; Obtain the account information for logging in to the “User Center” of CCCME website;
5. After the membership becomes effective, you will be entitled to enjoy the membership services immediately.

Contact information:

Tel: 86-10-58280836

Fax: 86-10-58280830

E-mail: member@cccme.org.cn



碳中和服务平台小程序



机电商会大讲堂小程序



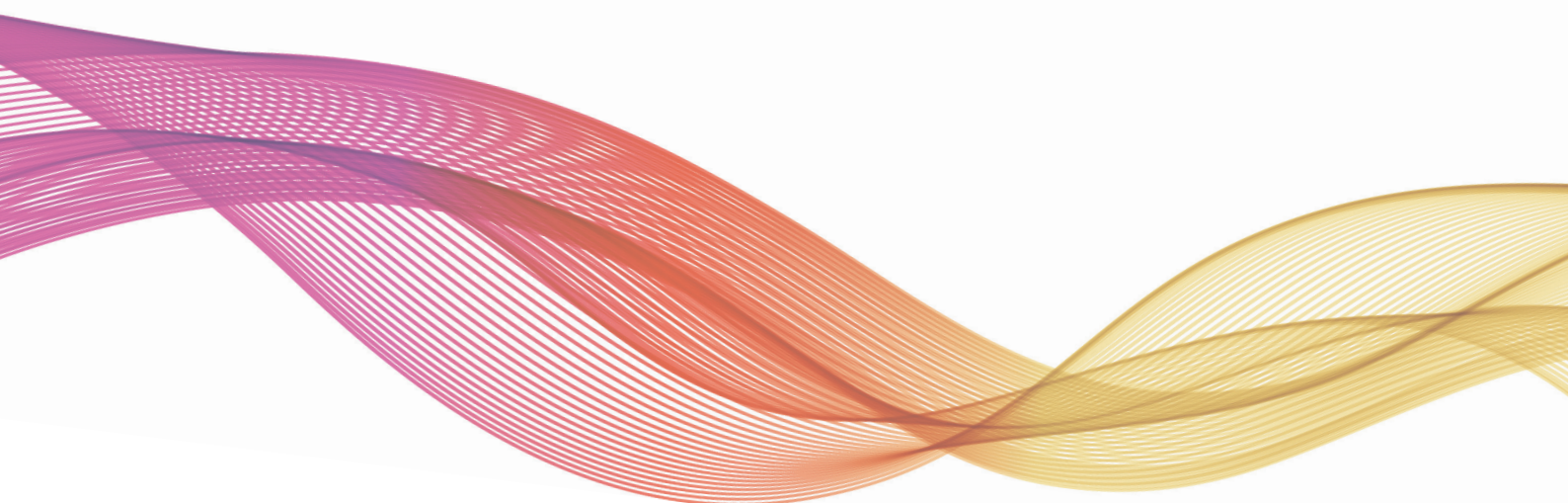
展览服务小程序



国际商机小程序



机电经贸小程序





中国机电商会公众号



专家工作委员会公众号



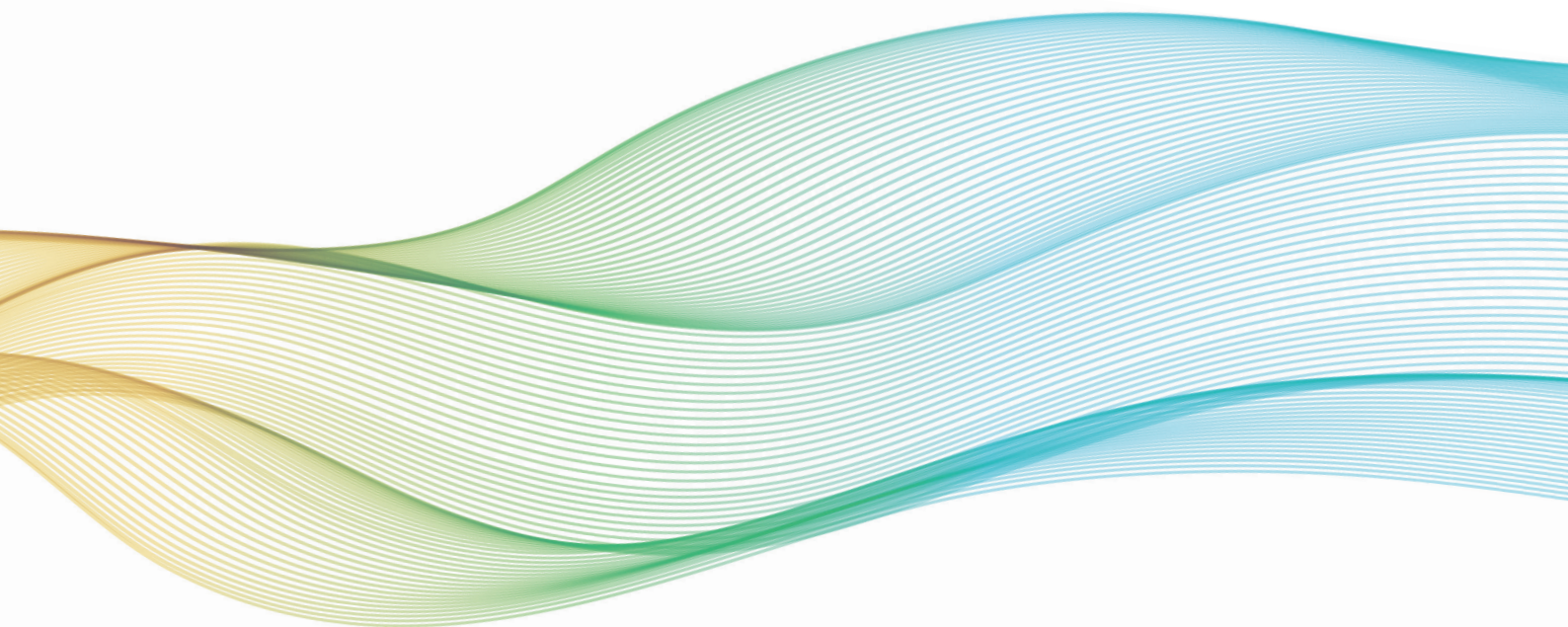
机电经贸公众号



极点法律资讯公众号



义乌装博会公众号



China Chamber of Commerce for Import and Export of Machinery and Electronic Products

<https://www.cccme.org.cn>

Tel: +86-10-58280863 +86-10-58280869

Fax: +86-10-58280810 +86-10-58280820

E-mail: member@cccme.org.cn (domestic) international@cccme.org.cn (overseas)

Add: 8th Fl., Office Tower 2, No.18, Jianguomennei Street, Dongcheng Dist. Beijing 100005

中国机电产品进出口商会

网址: <https://www.cccme.org.cn>

电话: +86-10-58280836 +86-10-58280833

传真: +86-10-58280810 +86-10-58280820

邮箱: member@cccme.org.cn (国内) international@cccme.org.cn (国际)

地址: 北京市东城区建国门内大街18号(恒基中心)办公楼2座8层(100005)

